

ESTTA Tracking number: **ESTTA1160639**

Filing date: **09/20/2021**

IN THE UNITED STATES PATENT AND TRADEMARK OFFICE  
BEFORE THE TRADEMARK TRIAL AND APPEAL BOARD

**Notice of Opposition**

Notice is hereby given that the following party opposes registration of the indicated application.

**Opposer Information**

Name	The Trustees of Columbia University in the City of New York
Granted to Date of previous extension	09/19/2021
Address	412 LOW MEMORIAL LIBRARY 535 W. 116TH ST NEW YORK, NY 10027 UNITED STATES
Attorney information	ERIC J. SHIMANOFF, ESQ. & SHANA DUNNING, ESQ. COWAN, LIEBOWITZ & LATMAN, P.C. 114 WEST 47TH STREET NEW YORK, NY 10036 UNITED STATES Primary Email: ejs@cll.com Secondary Email(s): trademark@cll.com, fxm@cll.com, szd@cll.com 2127909200
Docket Number	16034.063

**Applicant Information**

Application No.	88628751	Publication date	03/23/2021
Opposition Filing Date	09/20/2021	Opposition Period Ends	09/19/2021
Applicant	Women Creating Change SUITE 1002 110 WEST 40TH STREET NEW YORK, NY 10018 UNITED STATES		

**Goods/Services Affected by Opposition**


Class 035. First Use: 2019/03/22 First Use In Commerce: 2019/03/22 All goods and services in the class are opposed, namely: Promotional materials, namely, distribution and dissemination of advertising materials, production of advertising materials; promoting public awareness of policy issues pertaining to women by means of public advocacy
Class 041. First Use: 2019/03/22 First Use In Commerce: 2019/03/22 All goods and services in the class are opposed, namely: Educational materials, namely, development and dissemination of printed educational materials of others in the fields of intellectual property, educational programs and workshops, and public advocacy; providing educational materials in the nature of newsletters, pamphlets, one pagers and research papers to underserved women and women in need; educational programming, namely, conducting workshops and fellowship training programs in the field of advocacy and civic participation, and distribution of educational materials in connection

therewith; an educational website and phone-based application, namely, providing information relating to education services promoting public awareness of policy issues pertaining to women by means of public advocacy via a website and mobile application, providing information on-line and via a mobile application relating to educational opportunities, a continuing program featuring inspirational or motivational topics for women, advocacy and civic participation opportunities for women, accessible by means of web-based applications and mobile phone applications; providing an educational website featuring online non-downloadable videos in the field of public advocacy and civic participation; educational programming, namely, conducting in person workshops in the field of public advocacy and civic participation; university-based women's institute, namely, conducting in person instruction in the nature of classes, seminars, conferences, workshops and conducting distance learning instruction at the university level, as well as workshops on the basics of engaging in community work, and providing education services in the nature of courses at the university level

## Grounds for Opposition

Priority and likelihood of confusion	Trademark Act Section 2(d)
--------------------------------------	----------------------------

## Marks Cited by Opposer as Basis for Opposition

U.S. Application No.	88882405	Application Date	04/22/2020
Registration Date	NONE	Foreign Priority Date	NONE
Word Mark	WOMEN CREATING CHANGE		
Design Mark			
Description of Mark	NONE		
Goods/Services	<p>Class 035. First use: First Use: 2013/02/00 First Use In Commerce: 2013/02/00 PROMOTING PUBLIC INTEREST AND AWARENESS OF ISSUES CONCERNING WOMEN, GENDER AND INEQUALITY</p> <p>Class 041. First use: First Use: 2013/02/00 First Use In Commerce: 2013/02/00 EDUCATIONAL SERVICES, namely, PROVIDING EDUCATIONAL AND INFORMATIONAL PROGRAMMING, LECTURES, WORKSHOPS, FORUMS, PRESENTATIONS, CLASSES, CONFERENCES AND SEMINARS ON ISSUES CONCERNING WOMEN, GENDER AND INEQUALITY</p> <p>Class 045. First use: First Use: 2013/02/00 First Use In Commerce: 2013/02/00 PROVIDING INFORMATION ON SOCIAL JUSTICE ISSUES CONCERNING WOMEN, GENDER AND INEQUALITY</p>		

U.S. Application/ Registration No.	NONE	Application Date	NONE
Registration Date	NONE		
Word Mark	WOMEN CREATING CHANGE		
Goods/Services	Promoting public interest and awareness of issues concerning women, gender and inequality; educational services, namely, providing		

	educational and informational programming, lectures, workshops, forums, presentations, classes, conferences and seminars on issues concerning women, gender and inequality; research services concerning women, gender and inequality; and providing information on social justice issues concerning women, gender and inequality.
--	--

Attachments	88882405#TMSN.png( bytes ) Women Creating Change NOO and Exhibit A.pdf(824241 bytes )
-------------	--

Signature	/Shana Dunning/
Name	SHANA DUNNING
Date	09/20/2021

IN THE UNITED STATES PATENT AND TRADEMARK OFFICE  
BEFORE THE TRADEMARK TRIAL AND APPEAL BOARD

In re Application Serial No. 88628751  
Filed: September 24, 2019  
For Mark: WOMEN CREATING CHANGE  
Published in the Official Gazette: March 23, 2021

----- x  
THE TRUSTEES OF COLUMBIA UNIVERSITY : Opposition No.  
IN THE CITY OF NEW YORK, :  
 : **NOTICE OF OPPOSITION**  
Opposer, :  
 :  
v. :  
 :  
WOMEN CREATING CHANGE :  
 :  
Applicant. :  
----- x

Commissioner for Trademarks  
ATTN: Trademark Trial and Appeal Board  
P.O. Box 1451  
Alexandria, VA 22313-1451

Opposer, The Trustees of Columbia University in the City of New York, a New York corporation, having an address at 412 Low Memorial Library 535 W. 116th Street, New York, New York 10027 (“Opposer”), believes that it will be damaged by registration of the mark WOMEN CREATING CHANGE (“Applicant’s WOMEN CREATING CHANGE Mark”) for “Promotional materials, namely, distribution and dissemination of advertising materials, production of advertising materials; promoting public awareness of policy issues pertaining to women by means of public advocacy” in Class 35 and for “Educational materials, namely, development and dissemination of printed educational materials of others in the fields of intellectual property, educational programs and workshops, and public advocacy; providing

educational materials in the nature of newsletters, pamphlets, one pagers and research papers to underserved women and women in need; educational programming, namely, conducting workshops and fellowship training programs in the field of advocacy and civic participation, and distribution of educational materials in connection therewith; an educational website and phone-based application, namely, providing information relating to education services promoting public awareness of policy issues pertaining to women by means of public advocacy via a website and mobile application, providing information on-line and via a mobile application relating to educational opportunities, a continuing program featuring inspirational or motivational topics for women, advocacy and civic participation opportunities for women, accessible by means of web-based applications and mobile phone applications; providing an educational website featuring online non-downloadable videos in the field of public advocacy and civic participation; educational programming, namely, conducting in person workshops in the field of public advocacy and civic participation; university-based women's institute, namely, conducting in person instruction in the nature of classes, seminars, conferences, workshops and conducting distance learning instruction at the university level, as well as workshops on the basics of engaging in community work, and providing education services in the nature of courses at the university level” in Class 41 (collectively, “Applicant’s Services”) as shown in Application Ser. No. 88628751 (the “Application”), with a filing date of September 24, 2019, (the “Application Date”), and a claimed first use date of March 22, 2019 (“Applicant’s Claimed First Use Date”), filed on an in use basis under Trademark Act Section 1(a) 15 U.S.C. § 1051(a), by Women Creating Change, a New York non-profit corporation, with an address at Suite 1002 110 West 40th Street, New York, New York 10018 (“Applicant”), and having been granted an extension of time to oppose up to and including September 19, 2021, hereby opposes the same.

As grounds for opposition, it is alleged that:

1. Opposer operates COLUMBIA UNIVERSITY in New York City.
2. Since long before the Application Date, Applicant's Claimed First Use Date or any other priority date upon which Applicant may rely, Opposer has used the name and mark WOMEN CREATING CHANGE ("Opposer's WOMEN CREATING CHANGE Mark") to identify one of its initiatives as a single and distinct source of the following services: promoting public interest and awareness of issues concerning women, gender and inequality; educational services, namely, providing educational and informational programming, lectures, workshops, forums, presentations, classes, conferences and seminars on issues concerning women, gender and inequality; research services concerning women, gender and inequality; and providing information on social justice issues concerning women, gender and inequality (collectively, "Opposer's WOMEN CREATING CHANGE Services").
3. Established in 2013 as a part of Columbia University's Center for the Study of Social Difference, Opposer's WOMEN CREATING CHANGE initiative is currently a well-known women's empowerment organization that draws scholars, students, practitioners, and socially engaged artists together in an effort to address urgent problems concerning women, gender, and inequality and create solutions.
4. Opposer's WOMEN CREATING CHANGE initiative is headquartered in New York City and its leadership council is comprised of over 28 individuals from around the world.
5. Opposer's WOMEN CREATING CHANGE initiative currently supports working groups that publish books, create new curricula and engage communities worldwide regarding addressing prominent issues that women are facing.

6. Opposer has extensively promoted Opposer’s WOMEN CREATING CHANGE Services offered under Opposer’s WOMEN CREATING CHANGE Mark for several years through its website and other media. Attached hereto as **Exhibit A** are screenshots from Opposer’s and third party websites promoting Opposer’s WOMEN CREATING CHANGE Services offered in connection with Opposer’s WOMEN CREATING CHANGE Mark.

7. Opposer’s WOMEN CREATING CHANGE Services offered in connection with Opposer’s WOMEN CREATING CHANGE Mark have been the subject of various media coverage over the past eight years.

8. As a result of Opposer’s long-term, continuous and wide-spread use of Opposer’s WOMEN CREATING CHANGE Mark, and Opposer’s substantial investment of time, money and effort in marketing, promoting and providing Opposer’s WOMEN CREATING CHANGE Services offered in connection with Opposer’s WOMEN CREATING CHANGE Mark, Opposer’s WOMEN CREATING CHANGE Mark has developed substantial public recognition among members of the consuming public. As such, Opposer’s WOMEN CREATING CHANGE Mark operates as a unique source identifier associated with, and is of great value to, Opposer.

9. Opposer is the owner of the following U.S. trademark application for Opposer’s WOMEN CREATING CHANGE Mark (“Opposer’s WOMEN CREATING CHANGE Application”):

<b>Mark</b>	<b>Application No.</b>	<b>Filing Date</b>	<b>Services</b>
WOMEN CREATING CHANGE	88882405	April 22, 2020	Class 35: Promoting public interest and awareness of issues concerning women, gender and inequality.  Class 41: Educational services, namely, providing educational

			<p>and informational programming, lectures, workshops, forums, presentations, classes, conferences and seminars on issues concerning women, gender and inequality.</p> <p>Class 45: Providing information on social justice issues concerning women, gender and inequality</p>
--	--	--	--

10. Upon information and belief, Applicant did not use Applicant's WOMEN CREATING CHANGE Mark in United States commerce for any of Applicant's Services prior to Applicant's Claimed First Use Date.

11. Upon information and belief, Opposer's use of Opposer's WOMEN CREATING CHANGE Mark predates Applicant's use of Applicant's WOMEN CREATING CHANGE Mark by over five years.

12. Applicant's Services are identical or related to Opposer's WOMEN CREATING CHANGE Services offered in connection with Opposer's WOMEN CREATING CHANGE Mark or are the type of services consumer would expect to originate from or be licensed by, or affiliated or associated with, Opposer and Opposer's WOMEN CREATING CHANGE Mark.

13. Upon information and belief, Applicant's Services under Applicant's WOMEN CREATING CHANGE Mark will be promoted and distributed through the same, similar or overlapping channels of trade and commerce and to the same, similar or overlapping classes of consumers as Opposer's WOMEN CREATING CHANGE Services offered in connection with



Opposer's WOMEN CREATING CHANGE Mark. Upon information and belief, the parties also target the same donor base.

14. Opposer's WOMEN CREATING CHANGE Mark is distinctive and was so prior to the Application Date, Applicant's Claimed First Use Date or any other priority date upon which Applicant may rely.

15. Although Opposer has common law rights in Opposer's WOMEN CREATING CHANGE Mark that pre-date the Application Date, Applicant's Claimed First Use Date or any other priority date upon which Applicant may rely, the Examining Attorney for Opposer's WOMEN CREATING CHANGE Application has suspended Opposer's WOMEN CREATING CHANGE Application on the basis that Applicant's Application has an earlier filing date and if Applicant's Application matures to registration, the USPTO may refuse registration of Opposer's WOMEN CREATING CHANGE Mark based on a likelihood of confusion with Applicant's WOMEN CREATING CHANGE Mark under Trademark Act Section 2(d).

16. Applicant's WOMEN CREATING CHANGE Mark so resembles Opposer's WOMEN CREATING CHANGE Mark as to be likely, when used in connection with Applicant's Services, to cause confusion, to cause mistake, and to deceive the public, who are likely to believe that Applicant's Services have their origin with Opposer and/or that such services are approved, endorsed, sponsored or licensed by or otherwise associated in some way with Opposer, all in violation of Section 2(d) of the Trademark Act, 15 U.S.C. § 1052(d).

17. WHEREFORE, Opposer believes that it will be damaged by registration of Applicant's WOMEN CREATING CHANGE Mark and requests that the opposition against the Application be sustained and said registration be denied.

Please recognize as attorneys for Opposer in this proceeding Eric J. Shimanoff, Esq. (member of the bar of the State of New York), Shana Dunning (member of the bar of the State of New York) and the firm Cowan, Liebowitz & Latman, P.C., 114 West 47<sup>th</sup> Street, New York, New York 10036.

Please address all communications to Eric J. Shimanoff, Esq. at the address listed below.

Dated: New York, New York  
September 20, 2021

Respectfully submitted,

COWAN, LIEBOWITZ & LATMAN, P.C.  
*Attorneys for Opposer*

By:           /Shana Dunning/            
Shana Dunning  
Eric J. Shimanoff

114 West 47<sup>th</sup> Street  
New York, New York 10036  
(212) 790-9200

# **EXHIBIT A**

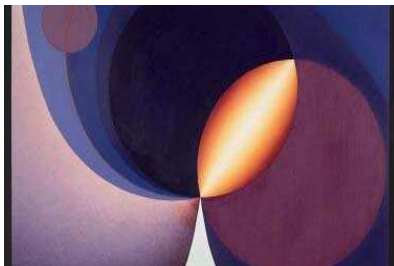
ABOUT (/ABOUT)  
 PEOPLE (/PEOPLE)  
 PROJECTS (/PROJECTS)  
 EVENTS (/EVENTS)  
 PUBLICATIONS (/PUBLICATIONS)  
 BLOG (HTTP://SOCIALDIFFERENCEONLINE.ORG/)

**MAKE A GIFT (/MAKE-A-GIFT)**

## WOMEN CREATING CHANGE

**Women Creating Change** engages distinguished feminist scholars from diverse fields throughout Columbia University who focus on contemporary global problems affecting women and on the roles women play in addressing these problems.

### ACTIVE WORKING GROUPS



(/projects-/motherhood-and-technology)

#### MOTHERHOOD AND TECHNOLOGY (/PROJECTS-/MOTHERHOOD-AND-TECHNOLOGY)

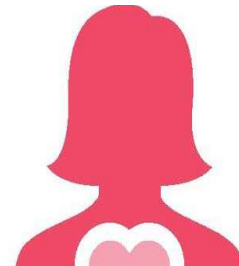
The Motherhood and Technology working group will explore how technological innovations have radically transformed the biological and social experience of motherhood in recent decades. Advances in genomic and reproductive care, the circulation of novel kinship structures, the entrenchment of existing global



(/projects-/insurgent-domesticities)

#### INSURGENT DOMESTICITIES (/PROJECTS-/INSURGENT-DOMESTICITIES)

*Insurgent Domesticities* brings into focus the insurgent environments, objects, and practices that make up the maintenance, creation, labor, and intimacies of home. Our collective investigates the more processual aspects of domesticity, to interrogate the politics of 'home,' through histories of solidarity, disobedience, stealth, and militancy, from the scale of the clothesline to that of the state.



(/projects-/womens-heart-disease-awareness)

#### WOMEN'S HEART DISEASE AWARENESS: DIGITAL INTERVENTION, CREATING CHANGE (/PROJECTS-/WOMENS-HEART-DISEASE-AWARENESS)

Cardiovascular disease (CVD) is the leading cause of mortality for women in the United States, accounting for more deaths than breast cancer, cervical cancer, and Alzheimer's disease combined, yet awareness of risk factors for CVD in women is extremely low and underprioritized. This group looks at big

networks of power and privilege, and the politics of contested bodily sites mark this emerging constellation.

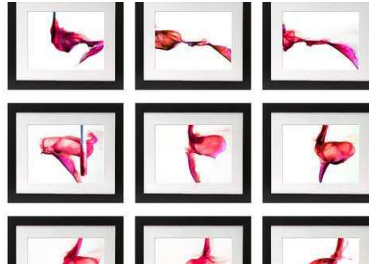
questions about what motivates women to make tangible changes to their health behaviors, and how to get people in health care policy, research funding, and the media more invested in women's health issues.



(/projects-/transnational-black-feminisms)

### TRANSNATIONAL BLACK FEMINISMS (/PROJECTS-/TRANSNATIONAL-BLACK-FEMINISMS)

The Transnational Black Feminisms working group aims to think about how transnational Black feminisms can move us beyond survivability and demands for recognition, and instead generate alternative frames and understandings around belonging, community, justice, and equity. Black feminism has, by necessity, emerged in tandem with political mobilizations: the struggle against slavery anti-colonialism; demands for government assistance or social services; and opposition to sexual or state violence, including Black Lives Matter.



(/projects-/menstrual-health-and-gender-justice)

### MENSTRUAL HEALTH AND GENDER JUSTICE (/PROJECTS-/MENSTRUAL-HEALTH-AND-GENDER-JUSTICE)

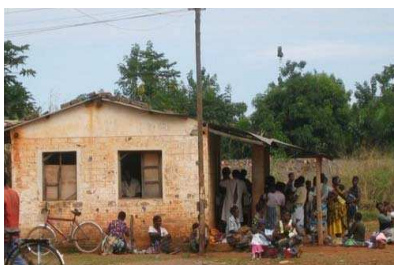
The Menstrual Health and Gender Justice working group seeks to further the nascent field of menstrual studies. This group puts particular emphasis on critically evaluating the current state of research, with interest in examining whose voices are being represented in the field, which actors shape the dominant narrative, whose voices are marginalized, what the gaps are, and how interdisciplinary collaboration might help remedy some of these gaps.



(/projects-/geographies-of-injustice-gender-and-the-city)

### GEOGRAPHIES OF INJUSTICE: GENDER AND THE CITY (/PROJECTS-/GEOGRAPHIES-OF-INJUSTICE-GENDER-AND-THE-CITY)

*Geographies of Injustice* is a working group of interdisciplinary scholars who are interested in asking how spatial politics intersects with inequality and social difference (race, caste, and ethnicity).



(/projects-/on-the-frontlines-nursing-leadership-in-pandemics)

### ON THE FRONTLINES: NURSING LEADERSHIP IN PANDEMICS (/PROJECTS-/ON-THE-FRONTLINES-NURSING-LEADERSHIP-IN-PANDEMICS)

The working group On the Frontlines: Nursing Leadership in Pandemics seeks to understand the role of nurses as change agents in the prevention, detection and response to pandemic infectious disease outbreaks.

## PAST WORKING GROUPS



(/projects-/religion-and-the-global-framing-of-gender-violence)

RELIGION AND THE GLOBAL FRAMING OF GENDER VIOLENCE  
(/PROJECTS-/RELIGION-AND-THE-GLOBAL-FRAMING-OF-GENDER-VIOLENCE)

Who pays the price and who benefits from the ways that religion is used to frame global understandings of Violence Against Women and gender violence? Religion and the Global Framing of Gender Violence (2016-19) aimed to reframe the conversation.

Sep 5, 2017



(/projects-/the-rural-urban-interface-gender-and-poverty-in-ghana-and-kenya-statistics-and-stories)

THE RURAL-URBAN INTERFACE: GENDER AND POVERTY IN GHANA AND KENYA, STATISTICS AND STORIES  
(/PROJECTS-/THE-RURAL-URBAN-INTERFACE-GENDER-AND-POVERTY-IN-GHANA-AND-KENYA-STATISTICS-AND-STORIES)

The Rural-Urban Interface (2015-18) studied migrant populations of women, youth and men in Ghana and in Kenya by combining oral histories with statistical analysis.

Sep 5, 2017



(/projects-/gender-the-global-slum)

GENDER & THE GLOBAL SLUM  
(/PROJECTS-/GENDER-THE-GLOBAL-SLUM)

How are gender relations impacted by material impoverishment and social segregation? Gender & the Global Slum (2013-17) looked at the social hazards of urban informality and its disproportionate effects on women.

Sep 5, 2017



(/projects-/reframing-gendered-violence)

REFRAMING GENDERED VIOLENCE



(/projects-/women-mobilizing-memory)

WOMEN MOBILIZING MEMORY



(/projects-/gender-religion-and-law-in-muslim-societies)

GENDER, RELIGION AND LAW IN MUSLIM SOCIETIES

## (/PROJECTS-/REFRAMING-GENDERED-VIOLENCE)

Reframing Gendered Violence (2016-19) aimed to open up a critical global dialogue among scholars and practitioners that recasts and broadens our understanding of what constitutes violence against women.

Aug 31, 2017

## (/PROJECTS-/WOMEN-MOBILIZING-MEMORY)

Women Mobilizing Memory (2013-20) explored the politics of memory in the aftermath of the atrocities of the twentieth and twenty-first centuries in comparative global perspective. The international working group analyzed the strategies by which women artists, scholars and activists have succeeded in mobilizing the memory of gender-based violence to promote redress, social justice, and a democratic future.

Aug 31, 2017

## (/PROJECTS-/GENDER-RELIGION-AND-LAW-IN-MUSLIM-SOCIETIES)

Gender, Religion and Law in Muslim Societies studied the unique forms of women's activism across the Muslim world, looking at how efforts by women to work within an explicitly religious framework in order to transform society and participate more fully in public debates have influenced state. The group explored the divergences and points of contact between the flourishing work of those termed "Islamic feminists" and those who might best be called "Islamist women," and evaluated the academic research used to promote the social inclusion and wider political transformation of women in the Islamic world.

Aug 31, 2017



(/projects-/social-justice-after-the-welfare-state)

SOCIAL JUSTICE AFTER THE WELFARE STATE  
(/PROJECTS-/SOCIAL-JUSTICE-AFTER-THE-WELFARE-STATE)

Social Justice After the Welfare State (2013-16) explored the implications of the declining welfare state for global politics, gender and race relations, and the future of democracy, imagining alternative models of life and new ways of thinking about the politics of the present.

Aug 31, 2017

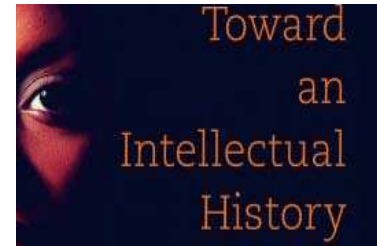


(/projects-/engendering-the-archive)

ENGENDERING THE ARCHIVE  
(/PROJECTS-/ENGENDERING-THE-ARCHIVE)

Power determines what is conserved and what is lost, which stories have been committed to collective memory and which ones have been erased. Engendering the Archive (2008-15) brought this fundamental feminist insight to bear on the examination of archival practices in the arts, literature, history, social science and everyday life.

Aug 31, 2017



(/projects-/2017/8/31/toward-an-intellectual-history-of-black-women)

TOWARD AN INTELLECTUAL HISTORY OF BLACK WOMEN  
(/PROJECTS-/2017/8/31/TOWARD-AN-INTELLECTUAL-HISTORY-OF-BLACK-WOMEN)

This research project was dedicated to recovering the history of black women as active intellectual subjects and to moving the study of black thought, culture, and leadership beyond the "Great Men" paradigm that characterizes most accounts of black intellectual activity, thus challenging the traditionally male dominated accounts of intellectual work.

Aug 31, 2017



vulnerability-and-resistance-  
feminism-and-social-change)

RETHINKING VULNERABILITY  
AND RESISTANCE: FEMINISM  
AND SOCIAL CHANGE  
(/PROJECTS-/RETHINKING-  
VULNERABILITY-AND-  
RESISTANCE-FEMINISM-  
AND-SOCIAL-CHANGE)

This project brought together a wide range of feminist scholars who work on the problem of women, vulnerability, and social change with an eye to understanding both the risks of establishing women as a vulnerable population, the tactical deployment of the status of vulnerability, and the promise of developing new modes of collective agency that do not deny vulnerability as a resource.

Aug 30, 2017

ABOUT (/ABOUT)  
PEOPLE (/PEOPLE)  
PROJECTS (/PROJECTS)  
EVENTS (/EVENTS)  
PUBLICATIONS (/PUBLICATIONS)  
BLOG (HTTP://SOCIALDIFFERENCEONLINE.ORG/)  
MAKE A GIFT (/MAKE-A-GIFT)

CENTER FOR THE STUDY OF SOCIAL DIFFERENCE, COLUMBIA UNIVERSITY, 767 SCHERMERHORN EXT,  
MAIL CODE 5510, NEW YORK, NY 10027, UNITED STATES

Search

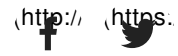


## CONTACT

Center for the Study of Social Difference  
Columbia University  
1200 Amsterdam Avenue  
767 Schermerhorn Extension, MC 5510  
New York, NY 10027

(212) 854-7090  
[socialdifference@columbia.edu](mailto:socialdifference@columbia.edu)  
(<mailto:socialdifference@columbia.edu>)

JOIN THE CSSD MAILING LIST



ABOUT (/ABOUT)  
 PEOPLE (/PEOPLE)  
 PROJECTS (/PROJECTS)  
 EVENTS (/EVENTS)  
 PUBLICATIONS (/PUBLICATIONS)  
 BLOG (HTTP://SOCIALDIFFERENCEONLINE.ORG/)

**MAKE A GIFT (/MAKE-A-GIFT)**



## SOCIAL ENGAGEMENT PROJECTS

**Social Engagement Projects** build on the work of former CSSD groups and align with Columbia University's Fourth Purpose "to extend Columbia's abilities to bring the extraordinary knowledge and capacities of the University in tandem with the wider academic community and actors beyond the campus to more effectively address pressing human problems."

Current Social Engagement Grant projects at CSSD:

- ZIP Code Memory Project: Practices of Justice and Repair  
 (<https://www.socialdifference.columbia.edu/the-zip-code-memory-project>)
- Reconstructing History in Rocinha, Rio de Janeiro and Dharavi, Mumbai  
 (<https://www.socialdifference.columbia.edu/reconstructing-history>)

## CSSD WORKING GROUPS





(<https://socialdifference.squarespace.com/women-creating-change>)

## WOMEN CREATING CHANGE (/WOMEN-CREATING-CHANGE)

**Women Creating Change** engages distinguished feminist scholars from diverse fields throughout Columbia University who focus on contemporary global problems affecting women and on the roles women play in addressing these problems.



(<https://socialdifference.squarespace.com/imagining-justice>)

## IMAGINING JUSTICE (/IMAGINING-JUSTICE)

**Imagining Justice** brings together scholars, activists, and artists on projects that envision new ways of fighting inequality and promoting gender, racial, economic, and environmental justice in global and domestic contexts.

## PROJECT GUIDELINES (/PROJECT-GUIDELINES)

ABOUT (/ABOUT)  
 PEOPLE (/PEOPLE)  
 PROJECTS (/PROJECTS)  
 EVENTS (/EVENTS)  
 PUBLICATIONS (/PUBLICATIONS)  
 BLOG (HTTP://SOCIALDIFFERENCEONLINE.ORG/)  
 MAKE A GIFT (/MAKE-A-GIFT)

CENTER FOR THE STUDY OF SOCIAL DIFFERENCE, COLUMBIA UNIVERSITY, 767 SCHERMERHORN EXT,  
 MAIL CODE 5510, NEW YORK, NY 10027, UNITED STATES

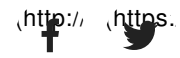
Search

CONTACT

JOIN THE CSSD MAILING LIST

Center for the Study of Social Difference  
Columbia University  
1200 Amsterdam Avenue  
767 Schermerhorn Extension, MC 5510  
New York, NY 10027

(212) 854-7090  
[socialdifference@columbia.edu](mailto:socialdifference@columbia.edu)  
(<mailto:socialdifference@columbia.edu>)



# WOMEN CREATING CHANGE

## The Women Creating Change Leadership Council

Columbia University's Women Creating Change Leadership Council is comprised of individuals who are committed to the exploration of issues that affect women and the ways in which women address global gender challenges. The mission of the Council is to promote and support interdisciplinary collaborative research and to sponsor events that publicize this important work. Council members assist faculty in framing how their academic endeavors can create greater impact and in connecting with interested individuals and organizations, providing a critical link between the University's faculty-led projects and global business, academic, and civil society.

### About Women Creating Change

Women Creating Change is housed at Columbia University's Center for the Study of Social Difference (CSSD), an interdisciplinary advanced research center founded in 2008. Projects in the Women Creating Change research stream at CSSD engage distinguished feminist scholars from diverse fields throughout Columbia University and the world who focus on global issues affecting women and on the roles women play in addressing these issues.

### Council Membership

WCC Council members represent a cross section of thought leaders in business, law, education, government, non-profit organizations, and civil society. A diversity of perspectives is an important aspect of the Council's leadership and thus members represent a wide range of experience, background, and geographic location.

### Responsibilities Include:

1. Participating in discussions on current WCC projects.
2. Working with the faculty of WCC in determining how to enhance the impact of WCC research.
3. Serving as an ambassador and advocate for the programs by facilitating connections to and encouraging the ongoing exchange of information and ideas with practitioners, potential research sponsors, interested community organizations and other appropriate external constituencies.
4. Attending and inviting other interested parties to panel discussions, lectures, and performances sponsored by WCC.
5. Assisting in the identification and recruitment of new Council members.
6. Providing objective guidance and feedback on development strategies.
7. Supporting WCC projects through direct support and/or by fostering connections to potential funders.



# Women Creating Change

COLUMBIA | SOCIAL DIFFERENCE  
CENTER FOR THE STUDY OF SOCIAL DIFFERENCE

WOMEN  
CREATING  
CHANGE

**Women Creating Change (WCC)**. engages distinguished feminist scholars from diverse fields throughout Columbia University who focus on contemporary global problems affecting women and on the roles women play in addressing these problem. WCC is housed at **The Center for the Study of Social Difference** which is an interdisciplinary research center supporting collaborative projects that address gender, race, sexuality, and other forms of inequality to foster ethical and progressive social change.



PREVIOUS

## Echoing Green

SPONSOR 2020

NEXT

## Columbia-IBM Center for Blockchain and Data Transparency

SPONSOR 2019, SPONSOR 2020

[2014](#) [2015](#) [2016](#) [2017](#) [2018](#) [2019](#) [2020](#) [2021](#) [2022](#)

[About](#) | [Contact Us](#)

© Copyright 2020 Columbia Entrepreneurship & Columbia Organization of  
Rising Entrepreneurs. All Rights Reserved.

Created by [Casey Altman Design Inc.](#)

[ABOUT \(/ABOUT\)](#)  
[PEOPLE \(/PEOPLE\)](#)  
[PROJECTS \(/PROJECTS\)](#)  
[EVENTS \(/EVENTS\)](#)  
[PUBLICATIONS \(/PUBLICATIONS\)](#)  
[BLOG \(HTTP://SOCIALDIFFERENCEONLINE.ORG/\)](http://socialdifferenceonline.org/)

**[MAKE A GIFT \(/MAKE-A-GIFT\)](#)**

## THE WOMEN CREATING CHANGE LEADERSHIP COUNCIL (WCCLC)

Columbia University's Women Creating Change Leadership Council is comprised of individuals who are committed to the exploration of issues which affect women and the ways in which women address global gender challenges. The mission of the Council is to promote interdisciplinary collaborative research and to sponsor projects and events that publicize this important work. Council members assist the faculty in framing how their academic endeavors can create greater impact. The WCC Leadership Council provides a critical link between the University's faculty-led projects and global business, academic, and civil society. More information on Women Creating Change and Leadership Council membership is available here (</s/About-WCCLC-8556.pdf>).

## WCCLC MEMBERS

ANN KAPLAN (/FACULTY- KAPLAN)  Chair, WCCLC New York	ANNETTE ANTHONY (/FACULTY- ANTHONY)  London	ANJALI BANSAL (/FACULTY- BANSAL)  India	JEWELLE BICKFORD (/FACULTY- BICKFORD)  New York	A'LELIA BUNDLES (/FACULTY- BUNDLES)  Washington, DC	LISA CARNOY (/FACULTY- CARNOY)  New York
ISOBEL COLEMAN (/FACULTY- COLEMAN)  New York	GEORGINA CULLMAN (/FACULTY- CULLMAN)  New York	ABIGAIL ELBAUM (/FACULTY- ELBAUM)  New York	JANICE REALS ELLIG (/FACULTY- REALS- ELLIG)  New York	MELISSA FISHER (/FACULTY- FISHER)  New York	AMAL GHANDOUR (/FACULTY- GHANDOUR)  Lebanon
DEBORAH JACKSON	CAROLEE LEE	SAFWAN MASRI	LYNN MESTEL	CYNTHIA MOSES-	MOLLY MATHEWS



(/FACULTY- JACKSON) New York	(/FACULTY- LEE) New York	(/FACULTY- MASRI) New York	(/FACULTY- MESTEL) New York	MANO CHERIAN (/FACULTY- MOSES- MANOCHER New York	MULTEDO (/FACULTY- MATHEWS- MULTEDO) Rio de Janiero and New York
------------------------------------	--------------------------------	----------------------------------	-----------------------------------	---	--

DIANA MOREINIS NASSER (/FACULTY- MOREINIS- NASSER) São Paulo, Brazil	ALYSON NEEL (/FACULTY- NEEL) New York	LOIS PERELSON- GROSS (/FACULTY- PERELSON- GROSS) New York	PHILIPPA PORTNOY (/FACULTY- PORTNOY) New York	SAMIA SALFITI (/FACULTY- SALFITI) Jordan	S. MONA SINHA (/FACULTY- SINHA) New York
---	---	---	---	--	--

DIANA TAYLOR (/FACULTY- TAYLOR-2) New York	DAVIA TEMIN (/FACULTY- TEMIN) New York	RICHARD E. WITTEN (/FACULTY- E-WITTEN) New York	JACKI ZEHNER (/FACULTY- ZEHNER) Utah
--	--	---	--

## NEWS

MONA SINHA DIRECTS DOCUMENTARY ON TRANS REPRESENTATION IN HOLLYWOOD (/NEWS/2020/8/26/MONA-SINHA-DIRECTS-DOCUMENTARY-ON-TRANS-REPRESENTATION-IN-HOLLYWOOD)  
Jun 27, 2020

MONA SINHA JOINS FORCES WITH GLORIA STEINEM IN LETTER RESPONDING TO TRUMP'S NEW RULE ON TRANSGENDER RIGHTS (/NEWS/2020/8/26/MONA-SINHA-JOINS-FORCES-WITH-GLORIA-STEINEM-IN-LETTER-RESPONDING-TO-TRUMPS-NEW-RULE-ON-TRANSGENDER-RIGHTS)  
Jun 15, 2020

NEW NETFLIX DOCU-SERIES INSPIRED BY THE BOOK 'ON HER OWN GROUND' REACHES NUMBER 1 (/NEWS/2020/3/25/NEW-NETFLIX-DOCU-SERIES-INSPIRED-BY-THE-BOOK-ON-HER-GROUND-REACHES-NUMBER-1)  
Mar 25, 2020

SAFWAN MASRI PUBLISHES PIECE ON TUNSIAN DEMOCRACY IN THE FINANCIAL TIMES (/NEWS/2020/1/29/SAFWAN-MASRI-PUBLISHES-PIECE-ON-TUNSIAN-DEMOCRACY-IN-THE-FINANCIAL-TIMES)  
Jan 29, 2020

CSSD COLLABORATION WITH COLUMBIA GLOBAL CENTER IN ISTANBUL 2018-2019 (/NEWS/2019/12/4/CSSD-COLLABORATION-WITH-COLUMBIA-GLOBAL-CENTER-IN-ISTANBUL-2018-2019)  
Dec 4, 2019

## EVENTS CELEBRATING WOMEN CREATING CHANGE ([HTTPS://WWW.SOCIALDIFFERENCE.COLUMBIA.EDU/EVENTS-ON-CAMPUS-ABOUT-WOMEN-CREATING-CHANGE](https://www.socialdifference.columbia.edu/events-on-campus-about-women-creating-change))

Click **here** (<https://www.socialdifference.columbia.edu/events-on-campus-about-women-creating-change>) for a list of events around campus with a focus on women creating change.

[ABOUT \(/ABOUT\)](#)  
[PEOPLE \(/PEOPLE\)](#)  
[PROJECTS \(/PROJECTS\)](#)  
[EVENTS \(/EVENTS\)](#)  
[PUBLICATIONS \(/PUBLICATIONS\)](#)  
[BLOG \(HTTP://SOCIALDIFFERENCEONLINE.ORG/\)](http://socialdifferenceonline.org/)  
[MAKE A GIFT \(/MAKE-A-GIFT\)](#)

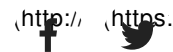
CENTER FOR THE STUDY OF SOCIAL DIFFERENCE, COLUMBIA UNIVERSITY, 767 SCHERMERHORN EXT,  
MAIL CODE 5510, NEW YORK, NY 10027, UNITED STATES

## CONTACT

Center for the Study of Social Difference  
Columbia University  
1200 Amsterdam Avenue  
767 Schermerhorn Extension, MC 5510  
New York, NY 10027

(212) 854-7090  
[socialdifference@columbia.edu](mailto:socialdifference@columbia.edu)  
(<mailto:socialdifference@columbia.edu>)

JOIN THE CSSD MAILING LIST



# **CENTER FOR THE STUDY OF SOCIAL DIFFERENCE - WOMEN CREATING CHANGE**

**AREAS OF INTEREST**

## **PROJECTS THAT SUPPORT SOCIAL JUSTICE**



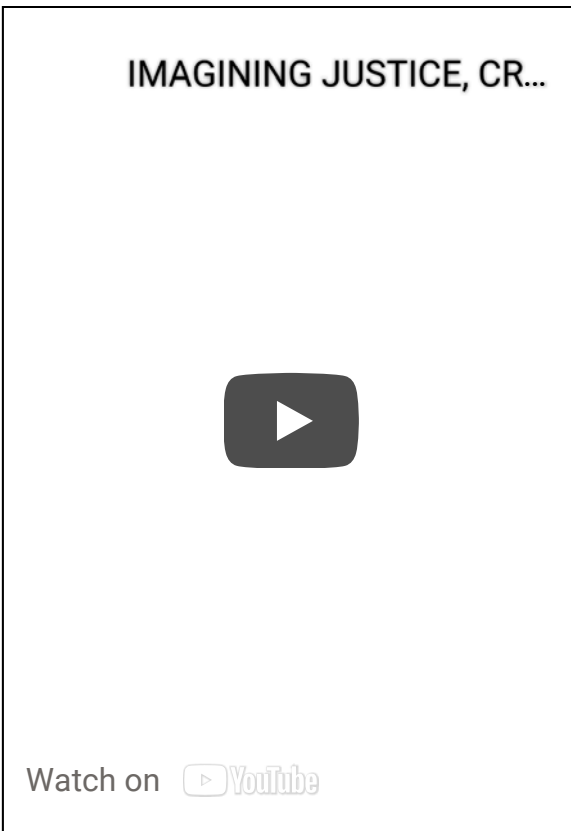
## INTERDISCIPLINARY WORKING GROUPS

The Center for the Study of Social Difference (CSSD) brings faculty and students together across all schools of Columbia University, in partnership with local and international organizations, to develop innovative conversations and research around global issues of social difference, including gender, race, sexuality, and other forms of inequality to foster ethical and progressive social change.



## SOCIAL ENGAGEMENT PROJECTS

Our Social Engagement Projects build on the work of established working groups and align with Columbia University's Fourth Purpose "to extend Columbia's abilities to bring the extraordinary knowledge and capacities of the University in tandem with the wider academic community and actors beyond the campus to more effectively address pressing human problems." Our faculty work with community partners to enact real social change.



## YOUR SUPPORT MAKES A DIFFERENCE!

CSSD supports collaborative projects, and our work has two overarching research themes: Women Creating Change and Imagining Justice. The social justice efforts of our faculty and students address issues of migration, queer theory, gender-based violence, pandemic leadership, reparative memory, and more. A gift to CSSD is important support for all of our programs and operations, and a gift to Women Creating Change goes directly to projects that focus on contemporary global problems affecting women and the roles women play in addressing these problems.

# SOCIAL DIFFERENCE ONLINE

A Blog by the Center for the Study of Social Difference

HOME EVENTS NEWS WORKING GROUPS

PUBLICATIONS MEDIA AFFILIATES CSSD



## Women Creating Change (WCC) Celebrates Fifth Anniversary

October 19, 2018



This September marked not only the ten year anniversary of the Center for the Study of Social Difference (CSSD) but, the five year anniversary of CSSD's project Women Creating Change (WCC), one of two streams of research and galvanization that engages distinguished feminist scholars

from diverse fields throughout Columbia University who focus on contemporary global problems affecting women and on the roles women play in addressing these problems.

The roundtable event, Telling Women's Stories: Creating Change, convened in celebration of WCC's anniversary, took place on Thursday September 27th at the Columbia Club (Penn Club) in midtown Manhattan. It was moderated by WCC Leadership Council member and Columbia University trustee, A'Lelia Bundles and featured journalists and writers, Nina Berman, Margo Jefferson, Aly Neel and Rebecca Traister.

The night began with introductory remarks by Columbia President Lee C. Bollinger, a steadfast supporter of CSSD and WCC and CSSD's Director Marianne Hirsch. Ann Kaplan, Chair of the Women Creating Change Leadership Council (WCCLC), was honored for her ardent support of CSSD and WCC.

Echoed throughout the night were the stories of women, with the acknowledgment of the power of what speaker Aly Neel referred to as, hyperlocal stories, personal oral histories of women, (particularly subaltern women) and the work these narratives do to disrupt the norm. Neel also emphasized the necessity of activating the youth toward action with accessible stories, which served as the catalyst for her recent endeavor, *Girl Power*, a children's book about pioneering women throughout Myanmar history.

Building off of the idea of hyperlocal stories, Nina Berman, documentary photographer and journalist, emphasized the importance of collaborative storytelling when telling stories around sexual violence and trauma. Traister, the author of the recently released book *Good and Mad: The Revolutionary Power of Women's Anger* addressed both the costs and necessity of first person testimonies by women and the anger many women are feeling. Pulitzer Prize winning author and journalist Margo Jefferson's delved into the power dynamics at play for women in telling their stories.

In the wake of Dr. Christine Blasey Ford's testimony of sexual assault allegations against now Supreme Court justice Brett Kavanaugh, the roundtable served as a sort of catharsis for many in the room as both Hirsch and Bundles remarked in their comments. The conversation also converged around themes of female anger, solidarity and evoked the #MeToo movement and Anita Hill.

Currently the working groups sponsored by CSSD under the Women Creating Change idea-stream include Menstrual Health and Gender Justice, Geographies of Injustice: Gender and the City, On the Frontlines: Nursing Leadership in Pandemics, Religion and the Global Framing of Gender Violence (RGFGV), and Reframing Gendered Violence (RGV).

See photos from the event [here](#).

*Contributed by Ayah Eldosougi*

---

Sign up for our  
Mailing List

Email address:

© 2014 [Center for the Study of Social Difference](#) | 763 Schermerhorn Extension/Mail Code 5510 New York, NY 10027