

ESTTA Tracking number: **ESTTA401194**

Filing date: **04/01/2011**

IN THE UNITED STATES PATENT AND TRADEMARK OFFICE
BEFORE THE TRADEMARK TRIAL AND APPEAL BOARD

Proceeding	91195086
Party	Defendant Sirius XM Radio Inc.
Correspondence Address	ERICA D KLEIN KRAMER LEVIN NAFTALIS AND FRANKEL LLP 1177 AVENUE OF THE AMERICAS NEW YORK, NY 10036 UNITED STATES kltrademark@kramerlevin.com
Submission	Motion for Summary Judgment
Filer's Name	Heather J. Chase
Filer's e-mail	kltrademark@kramerlevin.com
Signature	/hjc/
Date	04/01/2011
Attachments	Exhibit B-3.pdf (8 pages)(1005861 bytes)

Opposition No. 91195086
Ira Marlowe v. Sirius XM Radio Inc.
Against U.S. Application Serial No. 77/661,457
For SKYDOCK

Exhibit B-3

Ira Marlowe

From: Ira Marlowe [i.marlowe@blitzsafe.com]
Sent: Thursday, July 03, 2003 1:59 PM
To: 'Goodner, Douglas'
Cc: Don. Krcmarik (Don.Krcmarik@xmradio.com)
Subject: RE: SLA part for review of Skylink cradle

Hi Doug,

Thank you for the input; we can beef up the hinge and add a break away feature. The vents on the lower portion of the dock are there because we will have two circuit boards and the power supply (12-6V) in that cavity for the SkyFI. Do you think that the vents will be adequate? The Plastic will be ABS.

The dock will not need to use the IR as it will be located in the trunk , glove box or center arm rest (console). The OEM radio will control all the SkyFI functions.

We can make the cover in smoked, clear or solid black. please let me know your thoughts.

You can return the SLA to Blitzsafe 33 Honeck Street,Englewood, NJ 07631

Thank you,
Ira

-----Original Message-----

From: Goodner, Douglas [mailto:Douglas.Goodner@xmradio.com]
Sent: Thursday, July 03, 2003 1:21 PM
To: 'Ira Marlowe'; Krcmarik, Donald
Cc: Battista, Daniel; Wadln, Craig; Acker, Robert
Subject: RE: SLA part for review of Skylink cradle

Don/Ira;

Received the SLA this morning. Here are my comments:

- 1) SKYFI fit was fine. No interferences detected. Things may change a little once the Molex connector is used, but without the connector it fit nicely reducing the chances of rattling.
- 2) Hinge seems okay... a little under scaled if the lid is opened frequently. This design of hinge is notorious for cracking if it gets leaned on or shut with a lot of force. If it were designed to come free or break away when all the way open, that would have been better. Be sure to specify the hi temperature 777 material we're using for bulk of our plastics.
- 3) The cover is hard to open when closed. Not because of the snaps or hinge detents, but because there isn't anything to grab on to like a tab or grip ribs. If there was something like a divot or ribs on top that would help. Anything on the sides would be a little too wide to grip for the average size hand.
- 4) Venting on the sides of the lower portion are unnecessary. This area does not get hot and there isn't any way for this air to get where it needs to to help cool the hot area behind the receiver. Putting some through holes on the back of the cradle above the rear cover parting line and underneath the molded in bracket would help get air between the cradle and the back of the receiver. Vents on the top cover are okay but not as effective as a series of slots at the back edge where they are directly above the rear of the receiver. You could slot the back edge to resemble a "comb" and increase the air flow significantly.

Is the top cover going to be clear or opaque? If clear, I wouldn't bother molding in the XM logo. Clear would allow you to see the screen and use the IR if that's important. You could use a smoke clear if you wanted to tone the visibility down a bit.

Hope this is what you were looking for. Let me know where to return the prototype.

-----Original Message-----

From: Ira Marlowe [mailto:i.marlowe@blitzsafe.com]
Sent: Wednesday, July 02, 2003 4:36 PM
To: 'Krcmarik, Donald'; 'Goodner, Douglas'
Cc: 'Battista, Daniel'; 'Wadin, Craig'; 'Acker, Robert'
Subject: RE: SLA part for review of Skylink cradle

Hi Don,
Doug will have the SLA tomorrow.

Yours,
Ira

-----Original Message-----

From: Krcmarik, Donald [mailto:Donald.Krcmarik@xmradio.com]
Sent: Wednesday, July 02, 2003 4:05 PM
To: Goodner, Douglas
Cc: Battista, Daniel; Wadin, Craig; Acker, Robert; 'Ira Marlowe'
Subject: SLA part for review of Skylink cradle

Hello Doug. Ira Marlowe of Blitzsafe is sending you a polished SLA of the SKYlink cradle for your review for Skyfi fit and have you take a look at hinges and etc of the design. It should arrive for you in Florida tomorrow, July 3rd.

Thanks in advance for your review.

Don Krcmarik

Director, OEM Engineering
XM Satellite Radio Inc.
27777 Franklin Rd. Suite 300
Southfield, MI 48034
PH: 248-213-0252
Fax: 248-213-0257
Cell: 248-613-6561
donald.krcmarik@xmradio.com



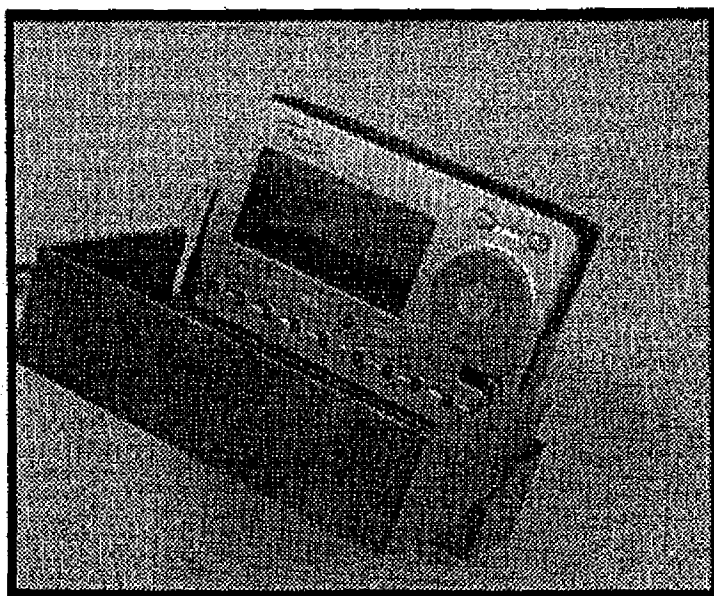
XM Satellite Radio Inc.
<http://www.xmradio.com>

This message contains information that may be confidential or privileged. The information is intended solely for the recipient and use by any other party is not authorized. If you are not the intended recipient, be aware that any disclosure, copying, distribution or use of the contents of

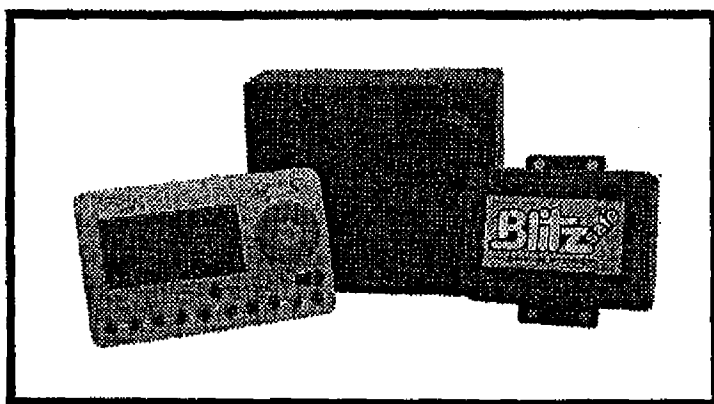
this information is prohibited. If you have received this electronic transmission in error, please notify us immediately by telephone (202.380.4000), fax (202.380.4500) or by electronic mail (postmaster@xmradio.com). Thank you.

SKYLINK DIRECT

INTEGRATING SATELLITE RADIO FROM YOUR HOME TO YOUR CAR.



The Delphi SkyFi in the new SkyLink Direct Cradle.



The SkyLink Direct System with the Delphi SkyFi Receiver.

DIRECT SATELLITE RADIO STRAIGHT TO YOUR HEADUNIT.

SkyLink Direct is an exciting new option for your Satellite-ready radio. SkyLink Direct is a docking station for the Delphi SkyFi XM radio that allows it to be installed anywhere in the vehicle and controlled by the OEM or aftermarket radio.

SkyLink Direct is a custom cradle designed specifically for the Delphi SkyFi XM receiver allowing satellite ready radios to display full text information, including channel number and name, artist, song title, category search, and radio presets, all from your radio.

SkyLink can be mounted anywhere in the vehicle; in the trunk, under the seat, glove compartment and center arm rest.

With BlitzSafe's Patent Pending car specific smart digital adapters and the SkyLink direct you can take your Delphi SkyFi's portability to the limit. Go from your headphones to your car stereo, use it in the home, in the office, or even your boat. That is true integration.

Available now for OEM and aftermarket satellite-ready radios.

Blitzsafe of America, Inc.

33 Honeck Street
Englewood, NJ 07631
www.blitzsafe.com

telephone: 201.569.5000

facsimile: 201.569.5042

e-mail: blitzsafe@blitzsafe.com

product showcase

Pacific Accessory Corporation



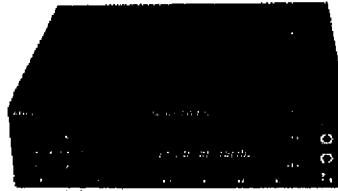
C2R-GM24 Radio Interface for newer GM vehicles

PAC's new C2R-GM24 allows you to easily replace the radio in most non-OnStar GM vehicles with a Class 2 Data Bus. Using the C2R-GM24, you don't relocate the factory radio, you won't lose the vehicle's safety chimes and you won't trigger a fault in the vehicle's BCM. It includes a 12 volt accessory wire, the factory "Retained Accessory Power" feature is preserved and its plug and play.

Pacific Accessory Corporation
1502 S. Santa Fe Street
Santa Ana, CA 92705
www.pac-audio.com

Call (800) 854-3133
Circle 125 on Reader Inquiry Card

Accele Electronics, Inc.



The DVD9520 can play DVD/CD/mp3, the unit comes with front panel RCA's A/V inputs and can be electronically switch from the hand held remote for video games or camcorders. The units 360° mounting system allows for mounting even in car center consoles, multi-function IR remote control, s-video output, and last screen memory function on power off. A 19" infrared remote eye (mini plug) and a four second anti-shock feature. The DVD9520 also includes a din in-dash trim ring. For easy in dash installations.

Accele Electronics, Inc.
P.O. Box 92139
DVD/mp3 player
Long Beach, CA 90809
ph: (562) 809-5090
fx: (562) 809-1248

Call Toll Free (800) 788-1212

Morel North America



Integra Ovation

As its name suggests, Integra Ovation integrates tweeter and woofer into one compact and powerful point-source unit. Integra utilizes the neodymium magnet motor drive system to achieve reduced mounting depth and increased loudspeaker sensitivity. Integra employs Morel's aluminum die-cast Uniflow™ basket design and a large diameter 54mm (2.1") aluminum Hexatech external voice coil.

The Acuflex™ coated soft dome tweeter delivers crystal-clear sound. The unit is acoustically integrated with the woofer motor drive system. The construction allows perfect integration and phase linearity with the woofer, ensuring smooth and linear frequency response to produce a point-source speaker.

Morel North America
1817 S. Citrus Cove
Mesa, AZ 85204
www.morelhifi.com

Call (480) 892-6121 or
Circle 264 on Reader Inquiry Card

Alumapro, Inc.



BP-Series subwoofers

ALUMAPRO has given its hard-hitting BP-Series subwoofers a new look for 2004. This facelift features solid brushed aluminum trim and matching hardware. The new plush nylon carpet covering cleans easily, and the viewing window is now thicker and stronger. Performance has been enhanced with the latest woofer revisions including stiffer frames, braided tinsels, and aramid-fiber spiders. The subwoofers are available now in 8-inch, 10-inch, and 12-inch versions. Contact Alumapro: www.alumapro.com 224-569-3650

Alumapro, Inc.
11936 Oak Creek Pkwy.
Huntley, IL 60142
ph: (224) 569-3650
fx: (224) 569-3653
www.alumapro.com

Call (224) 569-3650 or
Circle 154 on Reader Inquiry Card

Blitzsafe



The SkyLink Direct

This awesome Blitzsafe/American International product allows you to dock your SkyFi in a unique cradle, placed in the glove box, center-console or trunk. The Skyfi becomes an integrated OEM receiver using the Blitzsafe interface. Get all the functionality of the SkyFi displayed and controlled by your OEM or aftermarket radio. Channel number, Channel name, Artist, Song title and Category Scan with the plug-n-play flexibility of SkyFi. Available for satellite ready radios.

Blitzsafe of America
33 Honeck Street
Englewood, NJ 07631
www.blitzsafe.com

Call (800) 597-7233 or
Circle 191 on Reader Inquiry Card

Mito Corporation



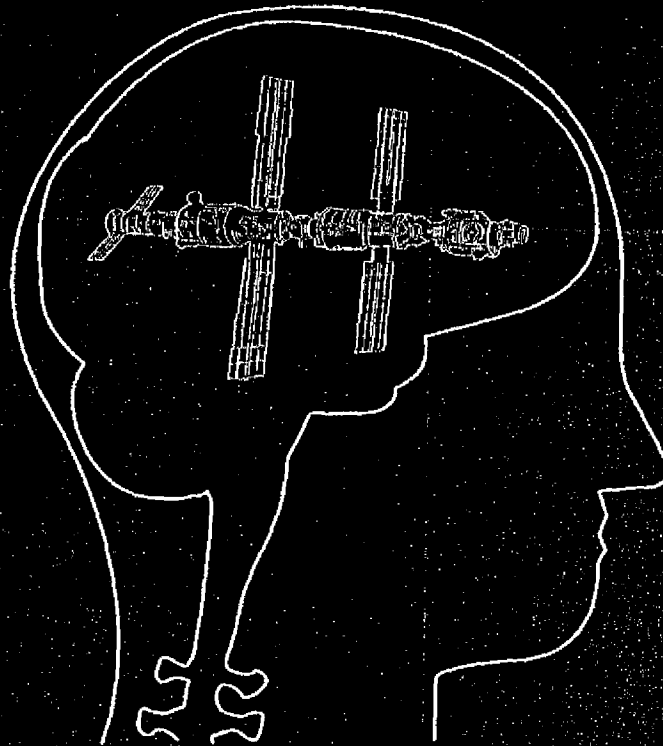
GENTEX Night Vision Safety™ NVS® Mirror Another Cool product from the "Guys with the Cool Stuff" MITO

GENTEX Night Vision Safety™ NVS® Mirror, automatically darkens to reduce glare from headlights of vehicles from the rear. The mirror contains a display window, showing outside temperature and compass. There is also an Ice Warning indicator when the outside temperature reaches 37 degrees. New this year at SEMA MITO is introducing this Factory OEM mirror now with LED Map Lights as an additional feature. Check this out at Booth # 20506. This is another exclusive product distributed by MITO Corporation.

MITO Corporation
54905 CR 17
Elkhart, IN 46516
1-800-433-6486

Call (800) 433-6486
Circle 122 on Reader Inquiry Card

YOU MAY FIND DIRECT SATELLITE RADIO GOING STRAIGHT TO YOUR HEADUNIT.



INTRODUCING THE SKYLINK DIRECT INTEGRATING SATELLITE RADIO FROM YOUR HOME TO YOUR CAR.

SkyLink Direct is an exciting new option for your Satellite-ready radio. SkyLink Direct is a docking station for the Delphi SkyFi XM radio that allows it to be installed anywhere in the vehicle and controlled directly by the OEM or aftermarket radio.

SkyLink Direct is a custom cradle designed specifically for the Delphi

SkyFi XM receiver allowing satellite ready radios to display full text information, including channel number and name, artist, song title, category search, and radio presets, all from your radio.

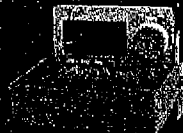
SkyLink can be mounted anywhere in the vehicle, in the trunk, under the seat, glove compartment and center arm rest.

With BlitzSafe's Patent Pending car specific smart digital adapters and the SkyLink Direct you can take your Delphi SkyFi's portability to the limit. Go from your headphones to your car stereo, use it in the home, in the office, or even your boat. That is true integration.

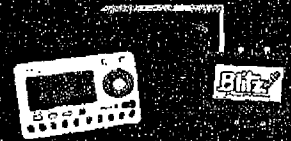
Available now for OEM and aftermarket satellite-ready radios.



SKYLINK DIRECT CRADLE



DELPHI'S SKYFI IS SKYLINK READY

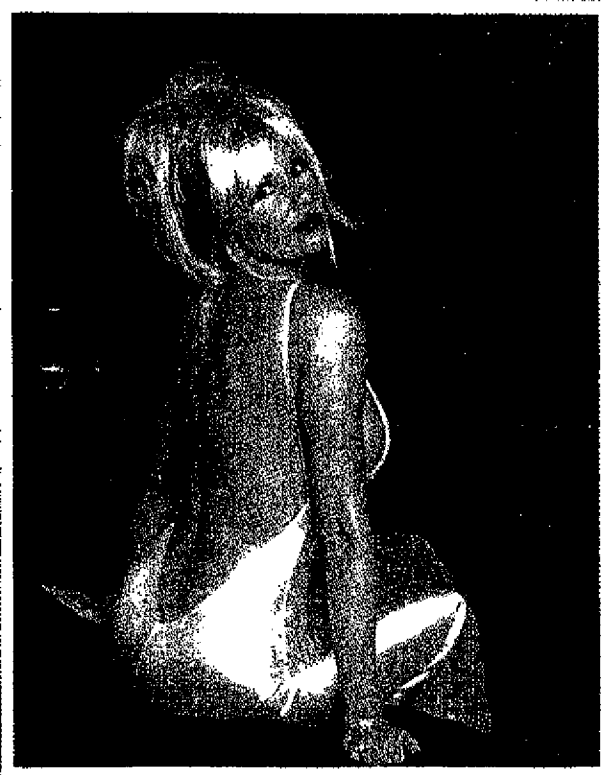


SKYLINK DIRECT SYSTEM

BlitzSafe Advanced Technologies
331 Honeck Street
Englewood, NJ 07631

telephone: 201.569.5000
fax: 201.569.5042
web: <http://www.blitzsafe.com>

Blitzsafe
Advanced Technologies



WE WILL HOOK YOU UP.

// AUXILIARY //

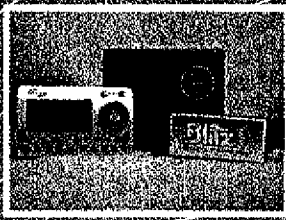
We will hook you up. No not on a date. With our beautiful model. But we will help you integrate any aftermarket audio input for your car. At Blitzsafe we pride ourselves in being the world's leader in integration products and OEM engineering excellence.

MPS

Blitzsafe interfaces have the absolute best sound quality in the market today. Blitzsafe interfaces are all designed, engineered and manufactured in the U.S.A. All of our Blitzsafe interfaces carry a full LIFETIME WARRANTY.

// SATELLITE //

You want satellite radio? Our new XM Direct Interfaces seamlessly connect your radio to the XM direct receiver. You will see channel artist and song title even features like category search and steering wheel controls. Most models are simple plug and play.



Advanced Technologies

Blitzsafe products allow you to enjoy your music while driving. All products are designed and manufactured in the U.S.A. Call us today for more information. 1-800-4-Blitzsafe. No just and imitation. Blitzsafe of America, Inc. 33 Honech Street, Englewood, NJ 07631 (Tel: 201-569-6000 web: www.blitzsafe.com)