

From: Vanston, Kathy

Sent: 4/5/2012 8:36:40 AM

To: TTAB EFiling

CC:

Subject: U.S. TRADEMARK APPLICATION NO. 85041968 - EAGLE MARINE SERVICES - 008114-01220 - Request for Reconsideration Denied - Return to TTAB - Message 2 of 3

\*\*\*\*\*

Attachment Information:

Count: 11

Files: ics2.jpg, murphy.jpg, ssc-1.jpg, ssc-2.jpg, ssc2-1.jpg, ssc2-2.jpg, sch2-1.jpg, sch2-2.jpg, sch2-3.jpg, sch2-4.jpg, sch2-5.jpg



## About Us

**Dedicated to our clients.** For more than 30 years, ICS Logistics has offered our international client base industry-leading customer service together with a peerless combination of experienced personnel and leading edge technology. All of our services are backed by the strength of our own domestic refrigerated and dry warehousing, transportation and marine divisions. And we stand ready to manage the full spectrum of logistics operations required to get your shipments to or from anywhere in the world.

**Devoted to our communities.** In addition to our dedication to customer service, ICS Logistics has a strong commitment to community service. We are proud to support the American Cancer Society, I.M. Sulzbacher Center, Dignity-U-Wear, Rodeheaver Boys Ranch, Toys-For-Tots, Secret Santa and several other important charities. We give our best, and then we give back by supporting those organizations that positively impact the communities where we, and our clients, live and work.

## Our Values

- *Treat our associates, customers and suppliers with respect and appreciation.*
- *Maintain a highly productive and pleasant work environment through the promotion of cooperation, consideration and teamwork.*
- *Meet the needs of our associates, customers and suppliers through prompt attention to their requests and needs.*
- *Establish a joint partnership with our customers in supporting their needs with a service level beyond expectations.*
- *Be Honest. We will not engage in any actions that might jeopardize the integrity of ourselves, our customers or suppliers.*
- *Honor Our Word. A handshake is sufficient.*

[OUR TEAM >>](#)



# Murphy Marine Services, Inc.



## Services & Facilities

- ◆ [Stevedoring](#)
- ◆ [Distribution Advantages](#)

## Industries

## Resources

## Safety and Loss Prevention

## Newsletter

## Stevedoring

Drawing from its supervisory staff with over 150 years of ship and terminal experience, Murphy Marine Services, Inc. can provide the practical knowledge necessary to handle all automobiles, breakbulk, bulk cargos and containers in an efficient and cost effective manner. Specializing in perishables, lumber, steel products and bulk cargos, we can provide full logistical services including discharge to or from vessels' holds, trucking, high-piling and short or long-term storage. Our ability to supervise your entire supply chain allows you to concentrate on other tasks while Murphy Marine Services safeguards all your transportation needs.



### Main Navigation

[Home](#)  
[About Us](#)  
[Career Opportunities](#)  
[Contact Us](#)

### Services

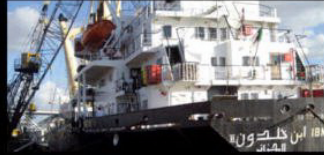
[Stevedoring](#)  
[Distribution Advantages](#)

### Other

[Industries](#)  
[Resources](#)  
[Safety and Loss Prevention](#)  
[Newsletter](#)

### Rate Request





# Shippers **Stevedoring** Company

- HOME
- OUR SERVICES**
- STEVEDORING
- OPERATIONS
- TERMINAL
- OPERATIONS
- WIND ENERGY
- BULK
- CFS TRACKING
- SYSTEM

Combining the right balance of people, resources, and experience allows us to meet the changing demands of today's diversified shipping industry. We are proud that our business is still a "people's business."

Our crews are at your service 24-hours a day, seven days a week. A multinational and multilingual management team, and specially trained dockside supervisors with the ability and flexibility to solve problems have earned us a reputation for responsive service, second to none.

Resource? The heaviest lift capacity in the Port of Houston... a fleet



**IMS CONTAINER  
DEPOT  
CONTACT US**

Resources? The heaviest lift capacity in the Port of Houston – a fleet of cranes with capabilities up to 300 tons, scores of varying capacity fork lifts, Ro Ro and terminal tractors, trailers and other specialized equipment – ready and waiting dockside to handle your heaviest, your most delicate, and your most valuable cargo, fast and efficiently.



***“World-Class Service that’s Simply the Best”***

Houston • Galveston • Beaumont • Port Arthur • Freeport • Charleston, South Carolina

*Shippers Stevedoring Company is a heavy lift and OOG services provider.*

[HOME](#) | [OUR SERVICES](#) | [STEVEDORING OPERATIONS](#) | [TERMINAL OPERATIONS](#) | [WIND ENERGY](#) | [BULK](#) | [CFS TRACKING SYSTEM](#) | [IMS CONTAINER DEPOT](#) | [CONTACT US](#)

© 2011 Shippers Stevedoring Company. All rights reserved.



# Shippers **Stevedoring** Company

- HOME
- OUR SERVICES
- STEVEDORING OPERATIONS
- TERMINAL OPERATIONS
- WIND ENERGY
- BULK
- CFS TRACKING SYSTEM
- IMS CONTAINER DEPOT
- CONTACT US

## TERMINAL OPERATIONS - CFS WAREHOUSES

Wharfs 29, 30 and 31, in the Turning Basin area, directly below Loop 610, are the newest and most convenient Northside docks at the Port of Houston.

Our eight-acre container yard is secured, paved, and fully equipped to handle all your container handling needs, including maintenance and repairs. Electrical connections for refrigerated containers are available at this facility.

A 16 acre yard is located next to IH - 610, only a few hundred yards from deep water docks. It is paved, fenced, and provides long and short term cargo storage and cargo consolidation. Two rail tracks of over 1800 feet of rail, served by the PTRA, provide instant access





over 1000 feet of rail, served by the I-10, provide instant access to the Port of Houston.

CFS services are available at all locations. Container stuffing and stripping is done onsite.



Our transit warehouse at Barbours Cut Terminal along with the new warehouse located at 1300 Barbours Cut Blvd provide for convenient cargo consolidation, stripping and stuffing. Our close proximity to the Port of Houston container terminals allows maximum container loading which generates tremendous savings opportunities.

#### WOODHOUSE TERMINAL



The Woodhouse Terminal is located just east of the Port of Houston City Docks with three deep water berths, truck scales, three warehouses with over 250,000 sq. ft., rail access and over 14 acres of open yard area, makes this terminal a premier location for project, wind energy, dry bulk and all types of breakbulk, heavy lift and steel cargos.

***“World-Class Service that’s Simply the Best”***

Houston • Galveston • Beaumont • Port Arthur • Freeport • Charleston, South Carolina

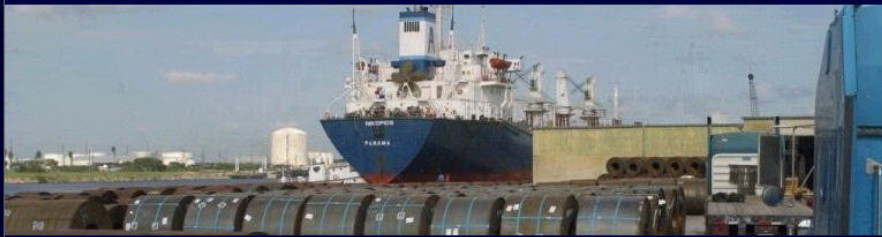
*Shippers Stevedoring Company is a heavy lift and OOG services provider*

[HOME](#) | [OUR SERVICES](#) | [STEVEDORING OPERATIONS](#) | [TERMINAL OPERATIONS](#) | [WIND ENERGY](#) | [BULK](#) | [CFS TRACKING SYSTEM](#) | [IMS CONTAINER DEPOT](#) | [CONTACT US](#)

© 2011 Shippers Stevedoring Company. All rights reserved.

# SCHAEFER STEVEDORING COMPANY

 GULF FACILITIES



[Home](#) | [About Us](#) | [Services & Offices](#) | [SchaeferCONNECT](#) | [Log-In](#) | [Contact Us](#)

## INDUSTRY LINKS

- [American Iron and Steel Institute](#)
- [Association of Iron and Steel](#)
- [Steel Manufactures Association \(SMA\)](#)
- [Steel Recycling Institute](#)
- [Steel Alliance](#)
- [The Steel Industry Search Engine](#)
- [The AISE Steel Foundation](#)

## SCHAEFER STEVEDORING COMPANY

### SERVICES & OFFICES

#### **\*\*SERVICES\*\***

[BONDED WAREHOUSE](#)  
[BREAKBULK](#)  
[BULK](#)  
[CONTAINER](#)  
[LOGISTICS - MEXICO](#)

#### **\*\*OFFICES\*\***

[LOCATIONS](#)

**Schaefer Stevedoring Company** offers a range of services in both the US and Mexico to meet the needs of all our clients, including but not limited to:

- Ship and Barge Stevedoring for Bulk, Break-bulk, and Containerized Cargos
- Container Terminal Operations
- Customs Coordination and Agent Recommendation
- Distribution Center Services
- "In-bond" Storage Capabilities

## EDI

- [All Standardized Exchange Formats](#)
- [Custom Solutions](#)
- [Not Fully EDI Connected?](#)  
Schaefer Gulf can help.

## INVENTORY VISIBILITY

- [Internet Accessible, 24/7](#)
- [In-transit Tracking](#)
- [On-Line Material Release](#)
- [Shipment History](#)
- [Shipping Document Creation](#)

- In-bond Storage Capacities
- Ocean and Land Freight Coordination
- Supervisory Cargo Handling Services for Operations Outside SSC Locations
- Terminal Handling Operations
- Complete Logistics Coordination Service
- General Warehousing Service
- Heavy Lift and Project Cargo Capacities
- Bagging Lines up to 4MT Sacks
- Marshalling Yards

#### **Bonded Warehouse**

**Schafer Stevedoring Company** has bonded warehouses at multiple locations, offering a principal advantage to the importer. "In-bond" storage allows the importer to defer payment of duties until the goods are sold and provides an on-site inventory location close to the importers marketplace. Additionally, bonded warehouses provide on-site security for stored inventory. The importer also has the option to export the goods to another country without paying duties.



[Top of Page](#)

#### **Break-bulk**

**Schafer Stevedoring Company** has the capacity at each location to handle all types of break-bulk cargo such as steel coils, plate, pipe, billets, wire rod, long products, concrete panels, aluminum ingots and sows, and a multitude of other products in all weights and specifications.

#### **Creation**





[Top of Page](#)

#### **Bulk**

**Schafer Stevedoring Company** has the capacity to handle all types of bulk cargo at each location such as scrap, pig iron, coal, magnacite, limestone, petroleum coke, bayrites, fluor spar, and a multitude of other bulk cargos.



[Top of Page](#)

#### **Container**

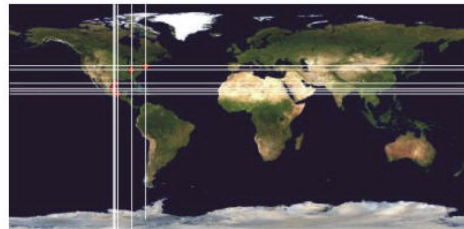
**Schaefer Stevedoring Company** is one of the few stevedores at the Port of Brownsville with the capacity to load and unload container vessels in the standard 20' and 40' lengths. We are able to handle any magnitude of containers at any of our facilities as well as transport them to their destination.



[Top of Page](#)

#### **Logistics – Mexico**

**Schaefer Stevedoring Company** has the capacity to take your cargo from Mexico or the United States and place it anywhere in the world via rail, truck, barge or ship. In addition, Schaefer Stevedoring Company is very active in the Mexican trucking industry with ownership in one of the finest Mexican trucking corporations.



[Top of Page](#)

**OFFICES**

Please send all inquiries and/or comments to our headquarters in the Port of Brownsville:

Schafer Stevedoring Company  
4201 Don Foust Rd  
Port of Brownsville, TX, 78523

Tel: + 1 (956) 831-4007  
Fax: + 1 (956) 831-9751  
Email: [info@schaferstedoring.com](mailto:info@schaferstedoring.com)

(Click Image Below to open a new window of Office and Facilities Locations.)



[Top of Page](#)

**Schafer Stevedoring Company**

*Quality and Integrity*

**BROWNSVILLE • LOUISVILLE • ALTAMIRA • TAMPICO • VERACRUZ**

